

# aPhinity EZ & EZ-A®

A Better Method of Detection

## Technical Information

### Target Pest

Cerambycidae beetles in the subfamily  
*Lamiinae* - many longhorn beetles

### Active Ingredient

EZ-Fuscumol  
EZ-Fuscumol Acetate

### Storage Information

Store for up to 2 years at -18° C

### Load Rate

50mg

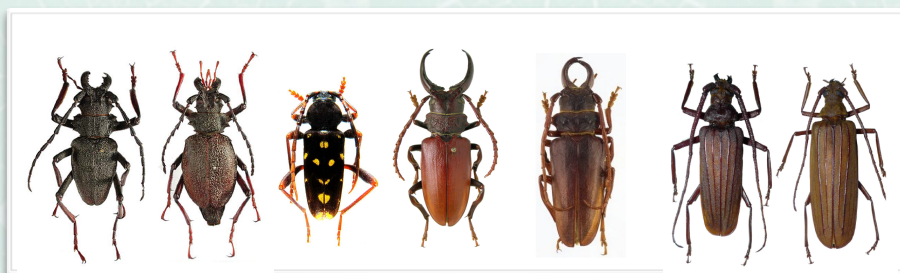
### Related Products

aPhinity BSLB

## Product Information

**aPhinity EZ & aPhinity EZ-A** were made available for the first time in the 2015 season and will once again be in stock for 2017. These adaptations of the aPhinity BSLB™ lure attract several species of longhorned beetles in the subfamily Lamiinae, especially when added to traps baited with high release rate ethanol lures.

This lure an effective monitoring tool that attracts many genera in this large sub-family that includes over 750 variations. Larvae attack both coniferous and deciduous plants. Most typically the larvae attack through boring at the trunk and branches and are highly attracted to sick trees (or ethanol lures).



# Sylvar



A member of the Andermatt group

aPhinity EAB